

**Test:** Primary 5 Science (Term 3) - Nan Hua (2020)

**Points:** 12 points

**Name:** \_\_\_\_\_

**Score:** \_\_\_\_\_

**Date:** \_\_\_\_\_

**Signature:** \_\_\_\_\_

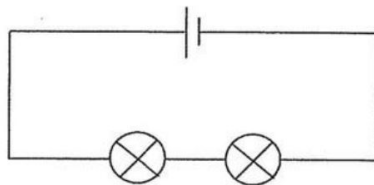
Select multiple choice answers with a cross or tick:

- Only select one answer
- Can select multiple answers

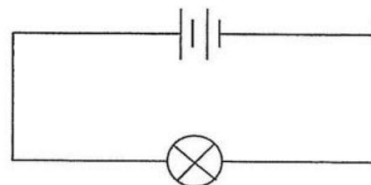
**Question 1 of 14**

Primary 5 Science (Term 3) 2 pts

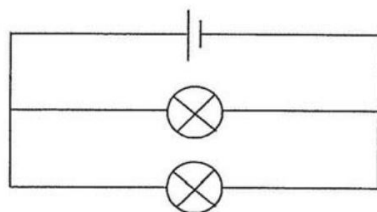
Jaslyn set up four electrical circuits, W, X, Y and Z. The bulbs and batteries used were identical, and they were all in working condition.



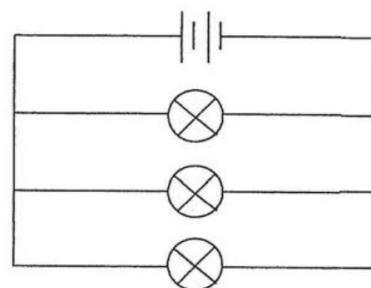
Circuit W



Circuit X



Circuit Y



Circuit Z

Which circuit will the bulb(s) be the least brightly lit?

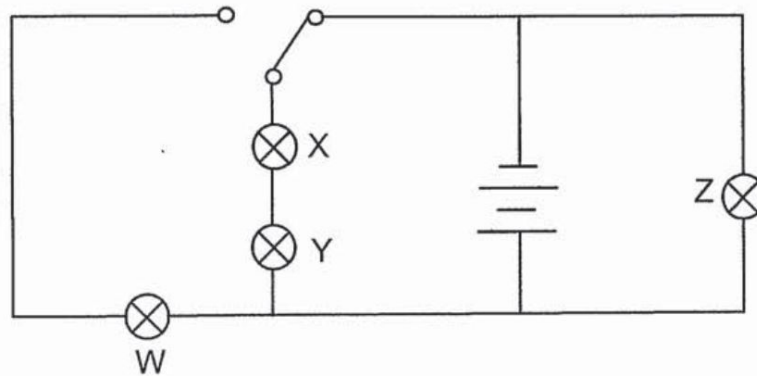
- A)** Circuit W
- B)** Circuit X
- C)** Circuit Y
- D)** Circuit Z

**Question 2 of 14**

Primary 5 Science (Term 3)

2 pts

The diagram below shows an electric circuit.



When the switch is at the current position, which bulb(s) will be the brightest?

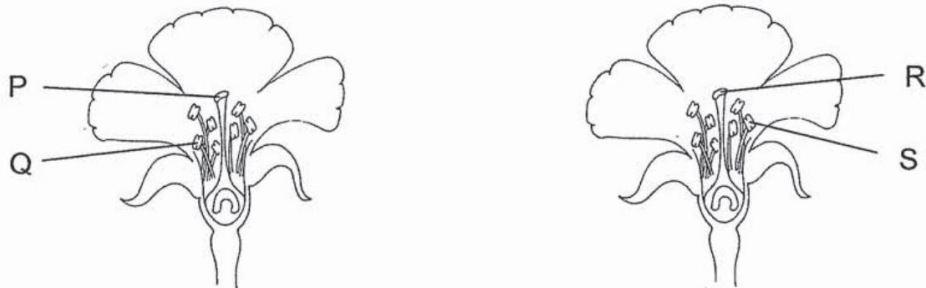
- A) Z only
- B) X and Y only
- C) X, Y and Z only
- D) W, X, Y and Z

**Question 3 of 14**

Primary 5 Science (Term 3)

2 pts

The diagram below shows two flowers from the same plant.



Pollination between these two flowers occurs when pollen grains are transferred from

\_\_\_\_\_.

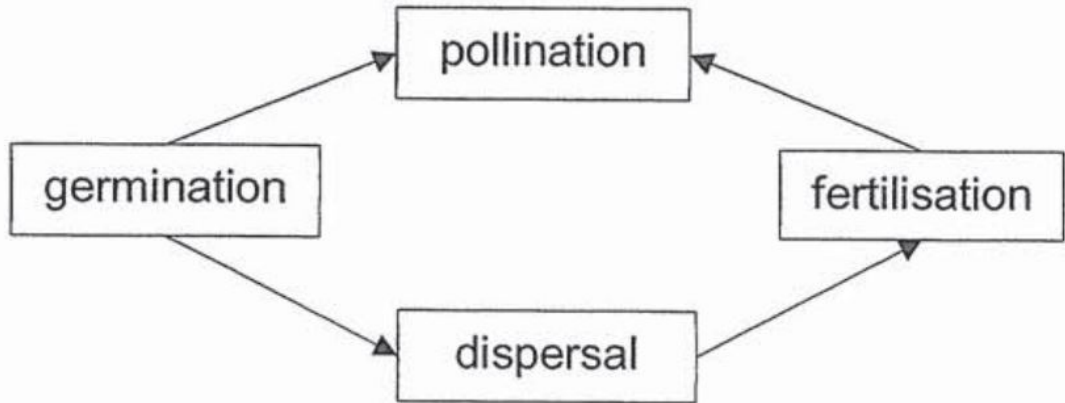
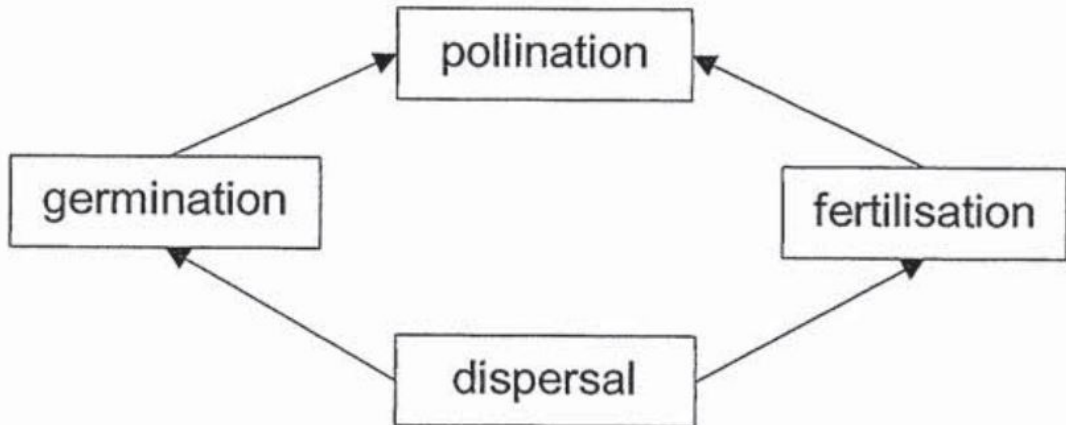
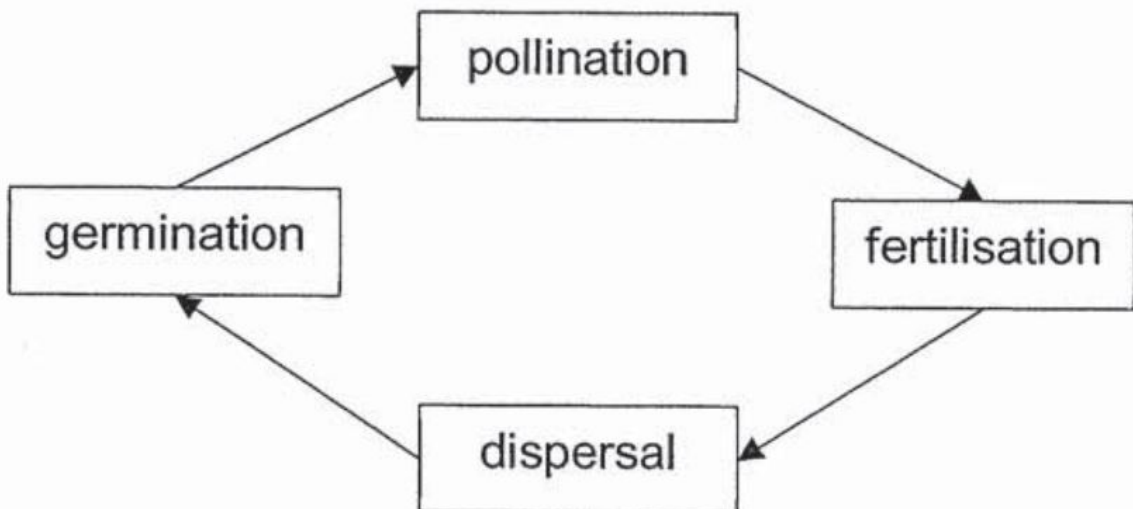
- A) P to R
- B) P to S
- C) Q to R
- D) Q to S

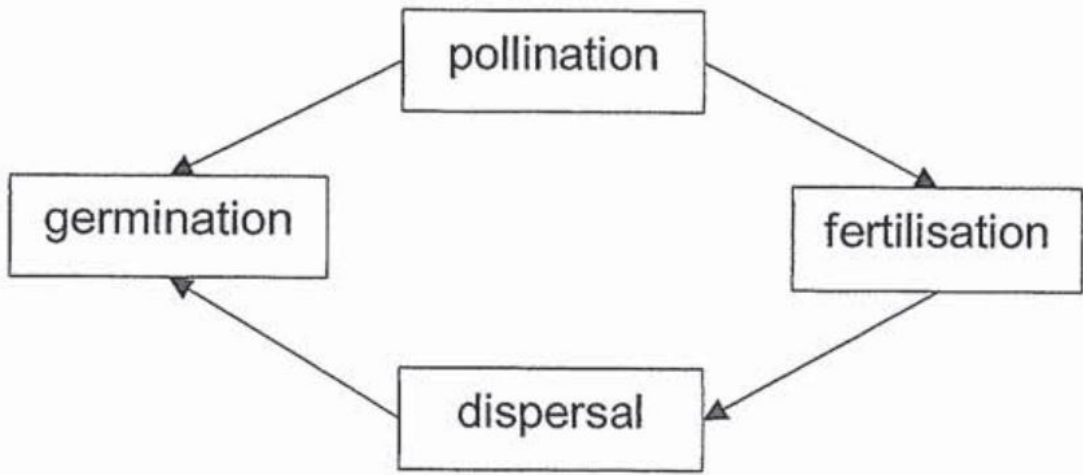
**Question 4 of 14**

Primary 5 Science (Term 3)

2 pts

Which one of the following shows the correct sequence in the reproduction of a flowering plant?

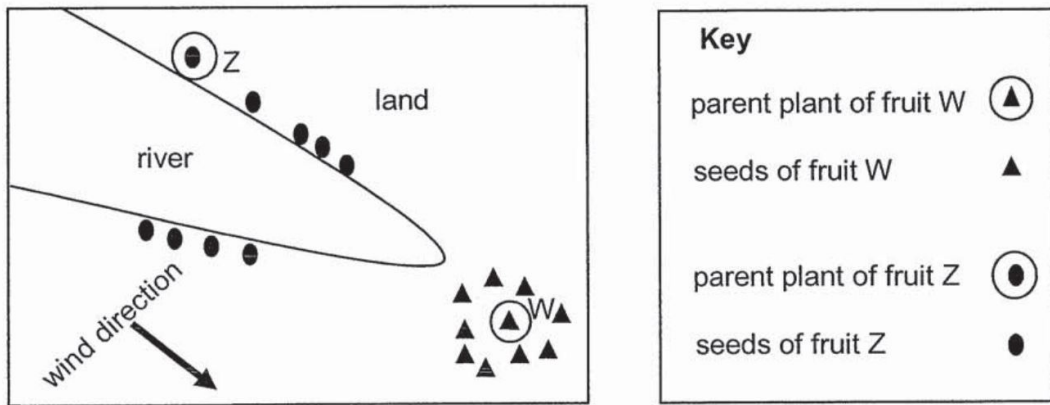
 A) B) C) D)



**Question 5 of 14**

Primary 5 Science (Term 3) 2 pts

The diagram below shows how the seeds of fruit W and Z are dispersed from their parent plants.



Which of the following shows the dispersal methods for seeds of fruit W and Z?

- A) 

<b>W</b>	<b>Z</b>
animal dispersal	wind dispersal
- B) 

<b>W</b>	<b>Z</b>
animal dispersal	water dispersal
- C) 

<b>W</b>	<b>Z</b>
splitting action	wind dispersal
- D) 

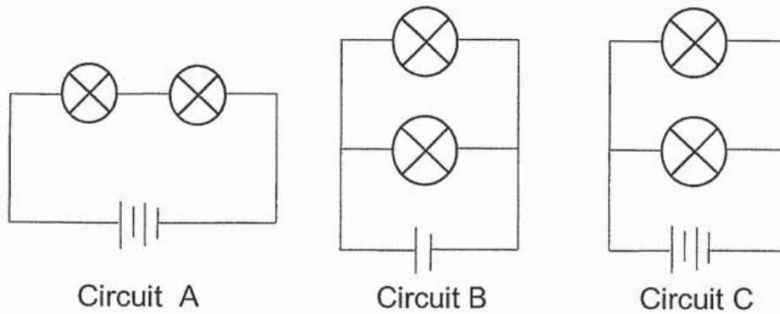
<b>W</b>	<b>Z</b>
splitting action	water dispersal

**Question 6 of 14**

Primary 5 Science (Term 3)

1 pt

Study the three circuit diagrams shown below. The batteries and bulbs used in the circuits are similar.



Which circuit, B or C, has bulbs that is as bright as those in circuit A?

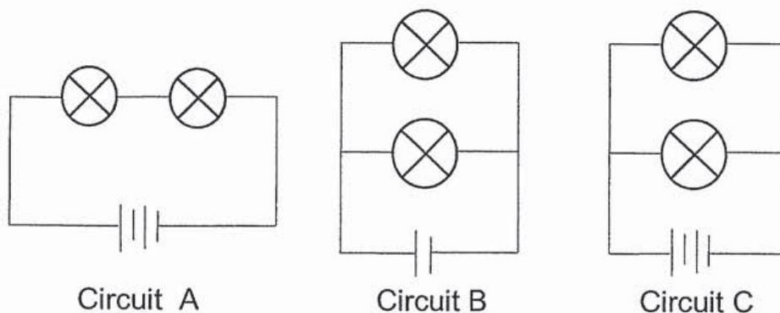
---

**Question 7 of 14**

Primary 5 Science (Term 3)

0 pts

Study the three circuit diagrams shown below. The batteries and bulbs used in the circuits are similar.



Gopal wants to find out if the arrangement of bulbs affect the brightness of the bulbs.

Which of the two circuits should he choose? Explain your answer. (1 mark)

*This question is designed for extended answers that parent/ teacher will have to assign and guide child to attempt after the test has been completed.*

*Grading: This question type is not graded on this system and will not affect the final score as it was designed in such a way that it requires manual assistance.*

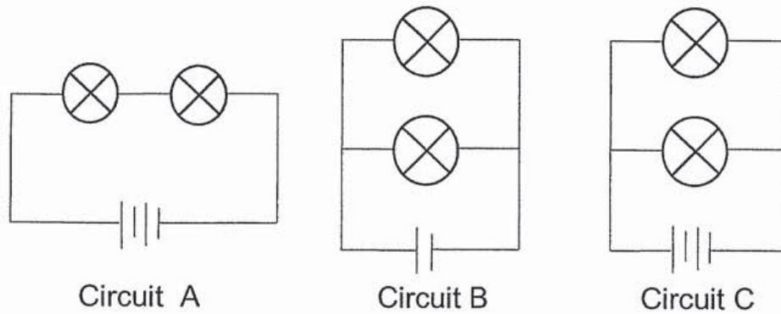
---

**Question 8 of 14**

Primary 5 Science (Term 3)

0 pts

Study the three circuit diagrams shown below. The batteries and bulbs used in the circuits are similar.

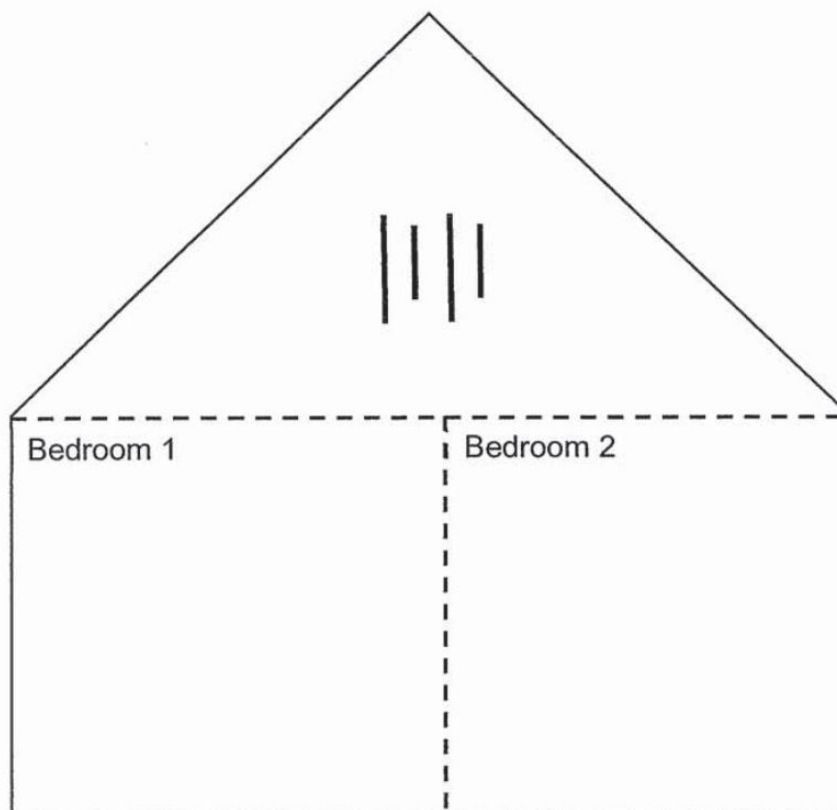


Janice has two bedrooms in her toy doll house. She wants to light up the two bedrooms in her doll house. Each bedroom needs a bulb to light up.

She has the following materials:

- wires
- two light bulbs
- two switches

Using symbols, draw a circuit diagram to show how the bulb in each room can be switched on or off one at a time without affecting the bulb in the other bedroom. Two batteries have been drawn for you below. [2]



*This question is designed for extended answers that parent/ teacher will have to assign and guide child to attempt after the test has been completed.*

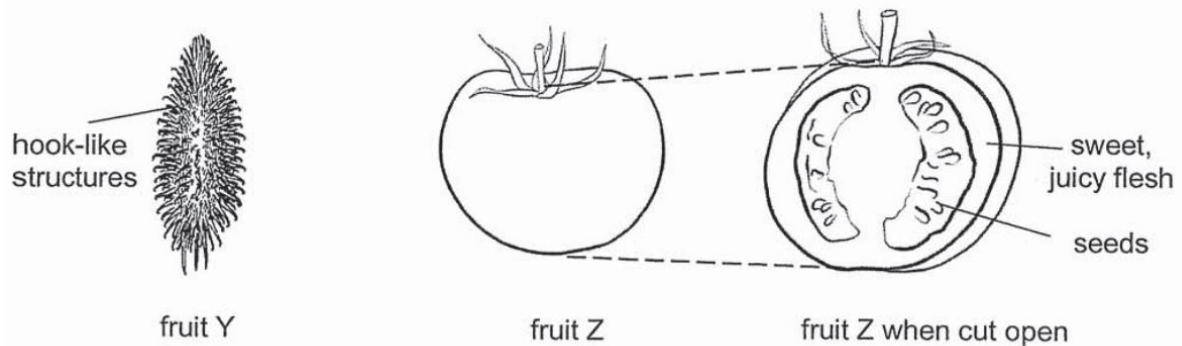
*Grading: This question type is not graded on this system and will not affect the final score as it was designed in such a way that it requires manual assistance.*

---

**Question 9 of 14**

Primary 5 Science (Term 3) 0 pts

The diagram below shows the fruits of two different plants.



State one similarity in the way the two plants disperse their seeds. (1 mark)

*This question is designed for extended answers that parent/ teacher will have to assign and guide child to attempt after the test has been completed.*

*Grading: This question type is not graded on this system and will not affect the final score as it was designed in such a way that it requires manual assistance.*

---

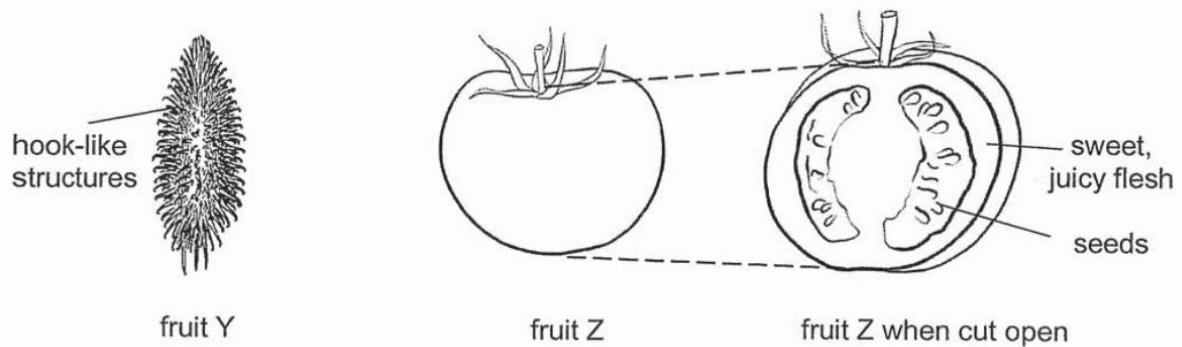


**Question 10 of 14**

Primary 5 Science (Term 3)

0 pts

The diagram below shows the fruits of two different plants.



Explain how the characteristic of fruit Y shown above helps in its seed dispersal. (1 mark)

*This question is designed for extended answers that parent/ teacher will have to assign and guide child to attempt after the test has been completed.*

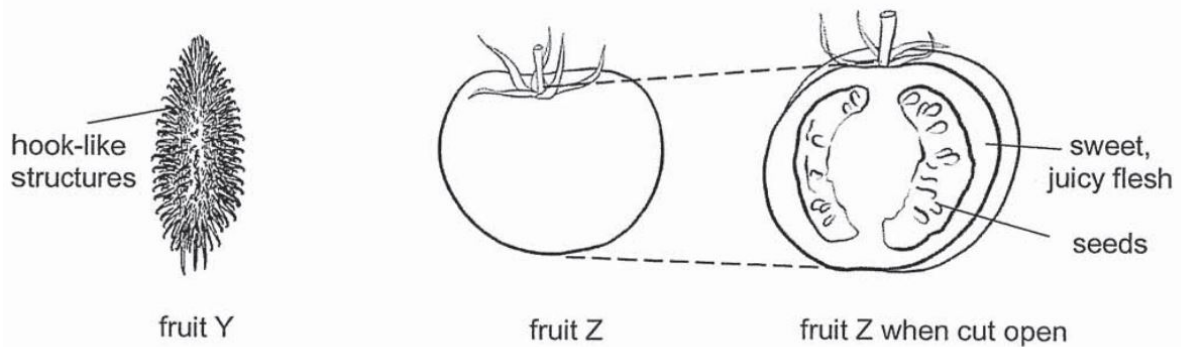
*Grading: This question type is not graded on this system and will not affect the final score as it was designed in such a way that it requires manual assistance.*



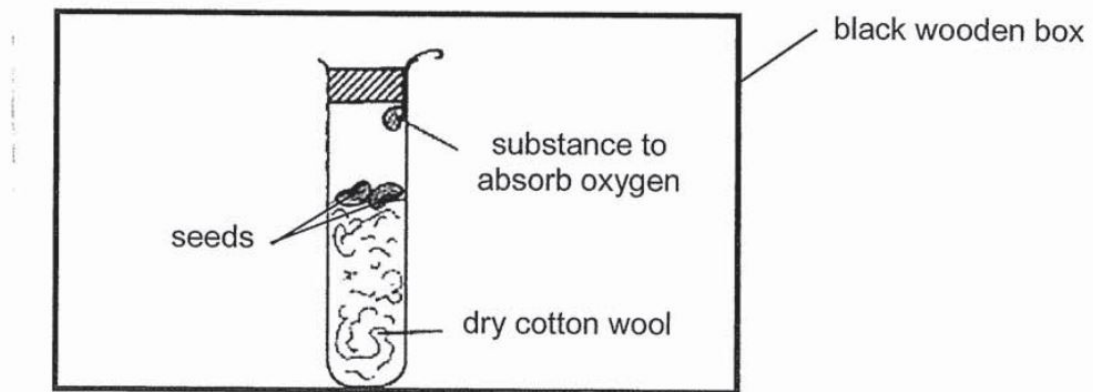
## Question 11 of 14

Primary 5 Science (Term 3) 0 pts

The diagram below shows the fruits of two different plants.



Jane wanted to grow some seeds. She placed the seeds in a set-up at room temperature as shown below.



After two weeks, none of the seeds germinated. What factors in the set up does she need to change in order for the seeds to germinate? Explain your answer. [1]

*This question is designed for extended answers that parent/ teacher will have to assign and guide child to attempt after the test has been completed.*

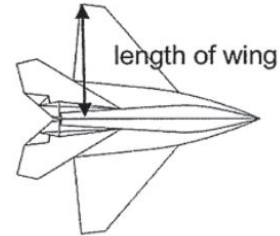
*Grading: This question type is not graded on this system and will not affect the final score as it was designed in such a way that it requires manual assistance.*

**Question 12 of 14**

Primary 5 Science (Term 3) 0 pts

Jason conducted an experiment to find out how the length of the wings of the paper aeroplane affects the time taken for it to reach the ground. He dropped four paper aeroplanes with different lengths of wings from the same height. He recorded his measurements in the table below.

Paper aeroplane	Length of wing (cm)	Time taken to reach the ground (s)
A	10	14
B	7	10
C	6	8
D	4	6



Based on the results, what is the relationship between the length of the wings of a paper aeroplane and the time taken for the paper aeroplane to reach the ground? (1 mark)

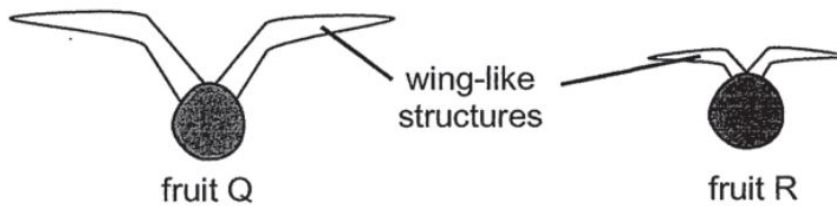
*This question is designed for extended answers that parent/ teacher will have to assign and guide child to attempt after the test has been completed.*

*Grading: This question type is not graded on this system and will not affect the final score as it was designed in such a way that it requires manual assistance.*

**Question 13 of 14**

Primary 5 Science (Term 3) 1 pt

Jason found two similar fruits from the same plant, fruit Q and fruit R, with wing-like structures of different lengths as shown below.

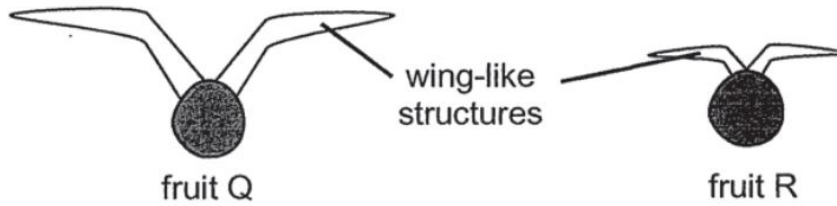


Based on the results above, which fruit will most likely be dispersed further away from the parent plant? Explain your answer.

**Question 14 of 14**

Primary 5 Science (Term 3) 0 pts

Jason found two similar fruits from the same plant, fruit Q and fruit R, with wing-like structures of different lengths as shown below.



Give a reason why the seeds of fruit Q and R need to be dispersed further away from the parent plant. (1 mark)

*This question is designed for extended answers that parent/ teacher will have to assign and guide child to attempt after the test has been completed.*

*Grading: This question type is not graded on this system and will not affect the final score as it was designed in such a way that it requires manual assistance.*

---